

# Ranchlands Mapping Group Update

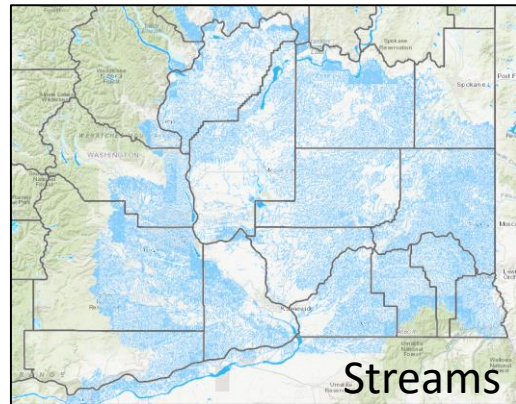
---

Presented by Jesse Ingels

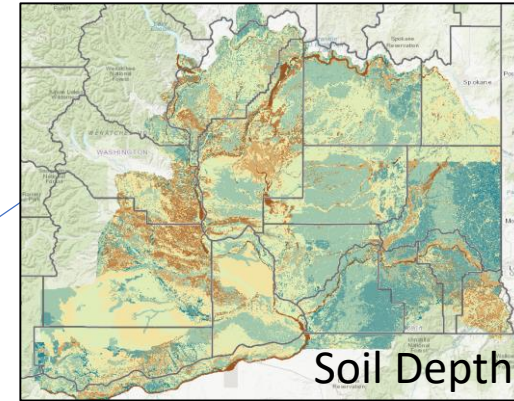
Goal: Produce a map that illustrates the least conflict and relative value of ranchlands based on available spatial data.



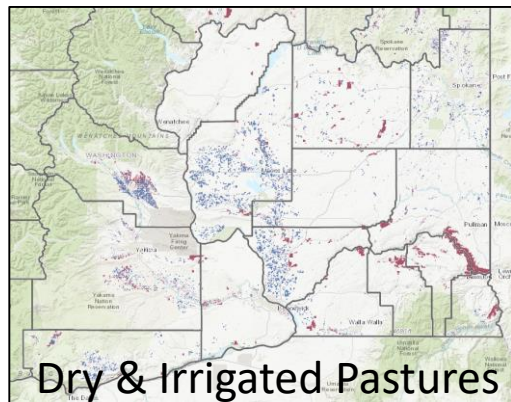
# Ranchland Value Modeling Criteria



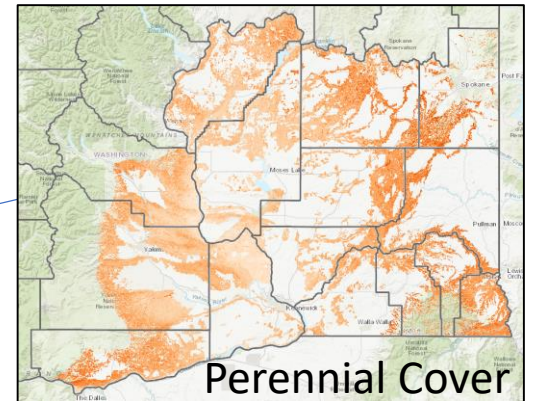
Soils



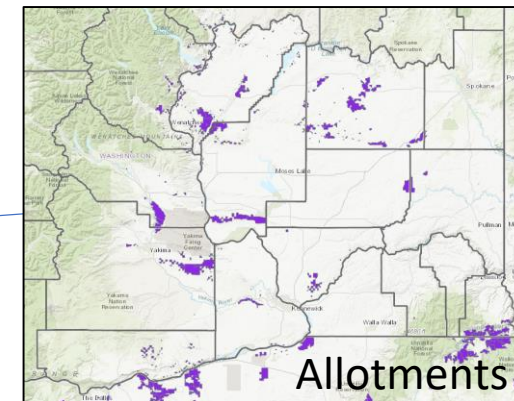
Water Access



Vegetation



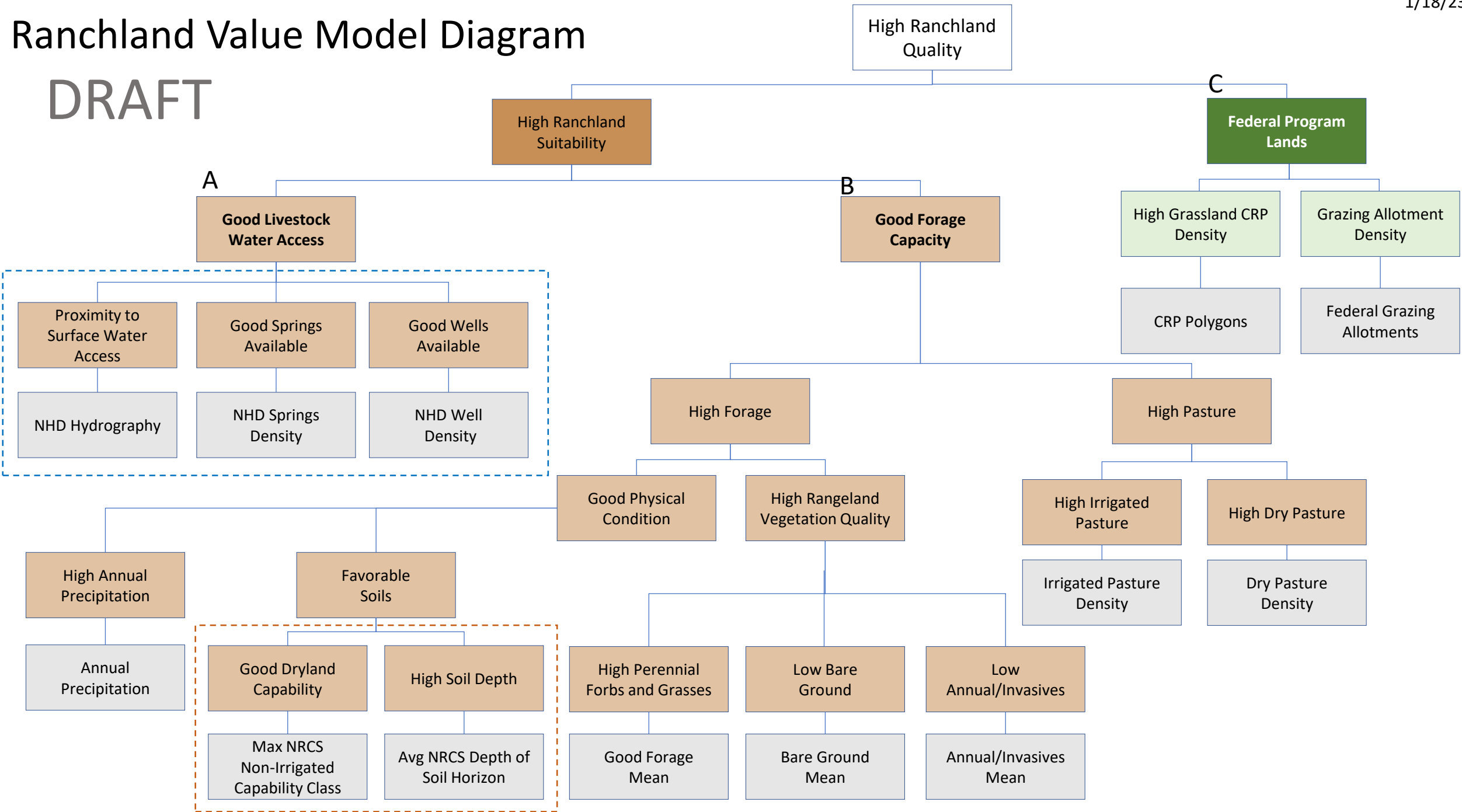
Managed Grasslands



Federal Programs

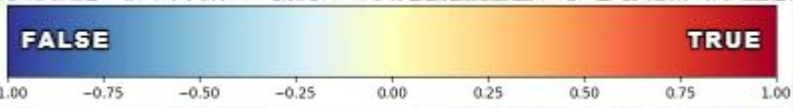
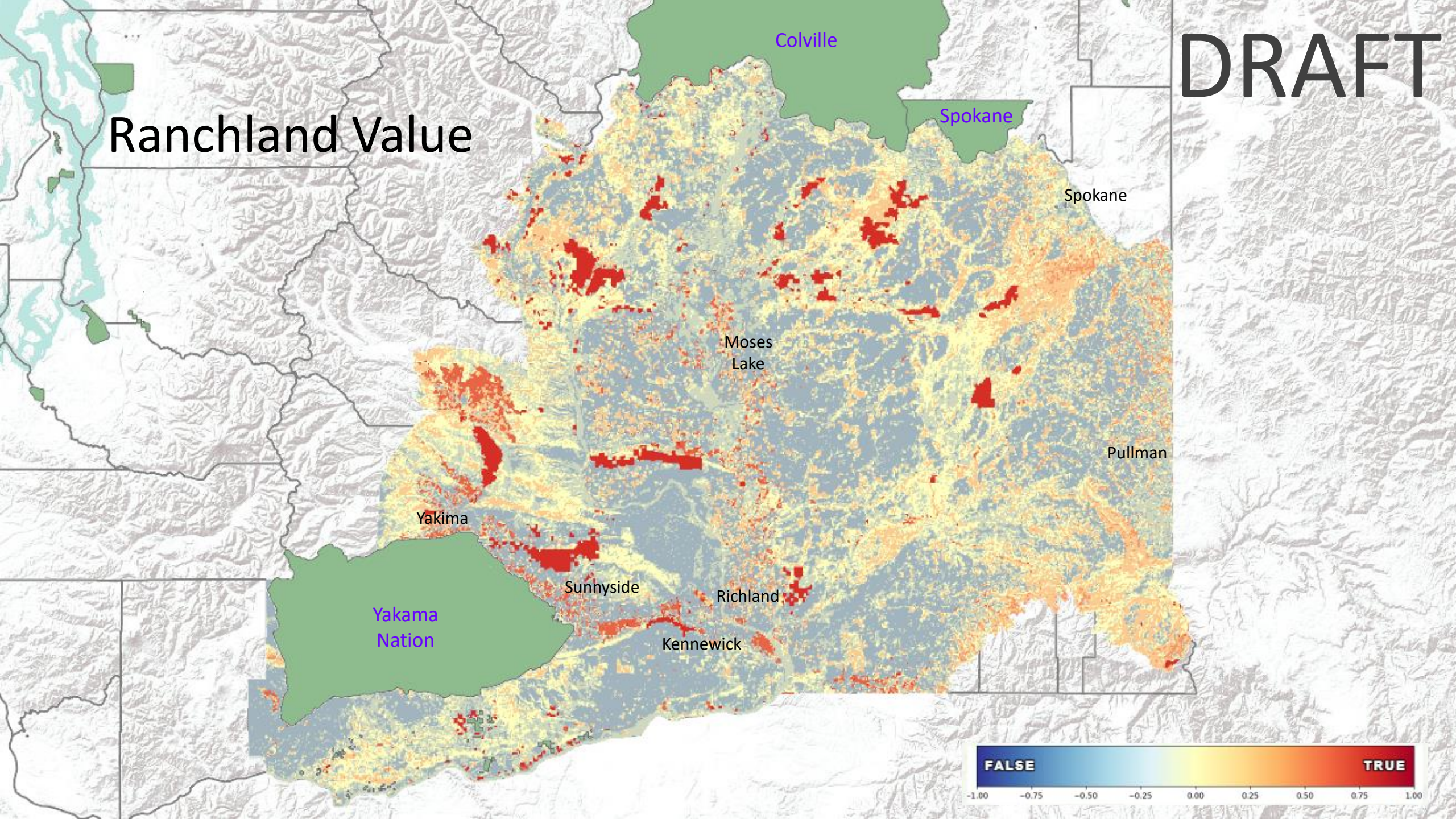
# Ranchland Value Model Diagram

# DRAFT

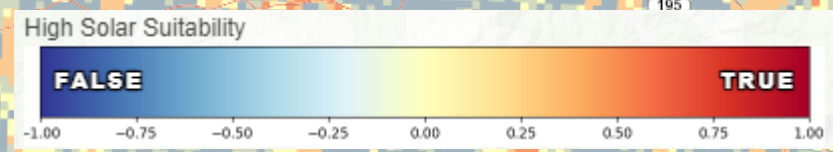
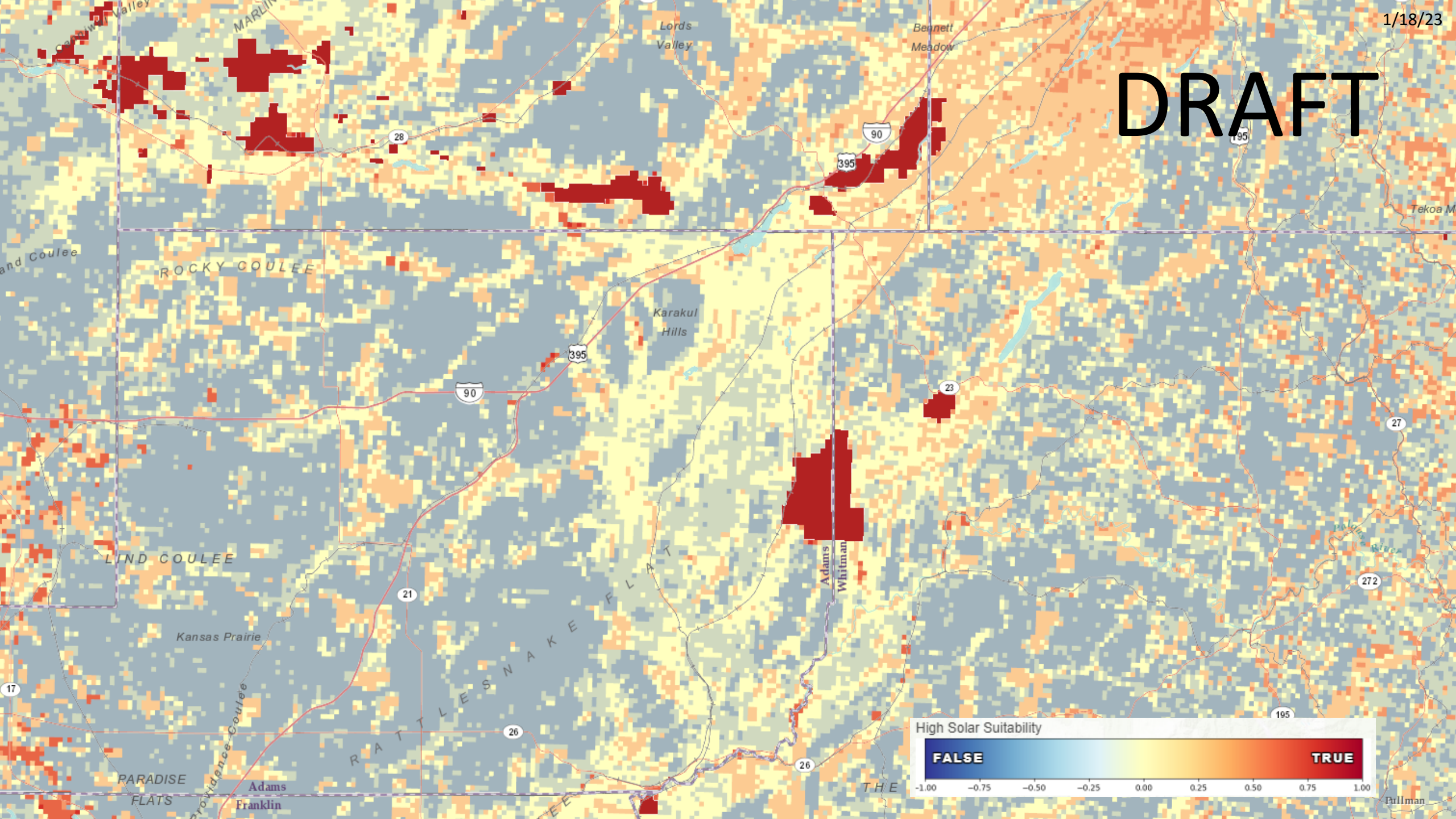


DRAFT

# Ranchland Value



# DRAFT



# Next Steps

---

- Share with colleagues and others for review and comment
- Include dryland farm areas
- Refine water availability for domestic livestock
- Refine soil characteristics that influences forage quality
- Exclude water, wetlands and developed land
- Evaluate and adjust model threshold and weight settings

